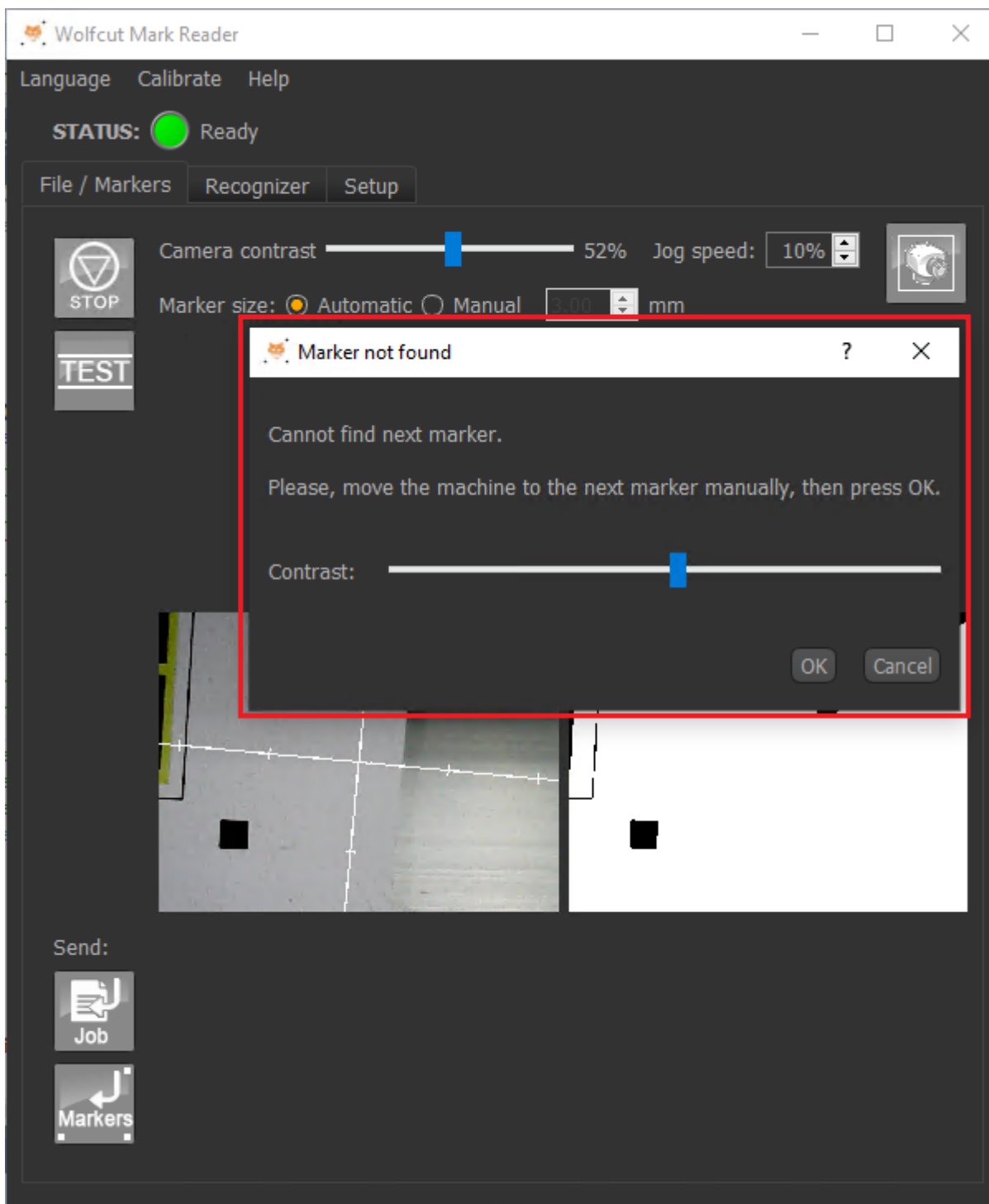


Marker not found?

Sometimes the CNC machine may not find the marks during image recognition. This is usually caused by the job not being aligned on the table but may be due to other things (see the troubleshooting section if you have problems not listed here).

When this happens, you'll get a popup window as shown in the image below:



To continue the recognition you need to manually move the CNC machine so that the camera is over to the mark then click "OK" (or use the cursor keys and press enter...).

If the mark is recognized then the recognition process will continue as normal.

From:

<https://wiki.wolfcut.es/> - **WMR manual**

Permanent link:

<https://wiki.wolfcut.es/doku.php?id=notfound>

Last update: **2022/09/13 14:39**

